



## Seamless Touch Experience with a Highly Durable Screen for Industrial, Medical, and Other Markets

### Projected Capacitive Touch Panel

The DuraVision FDF2382WT and FDS1782T feature projected capacitive (PCAP) touch technology which is more durable and reliable compared to other touch technologies. Both monitors accept touch input from a bare finger or dedicated stylus.



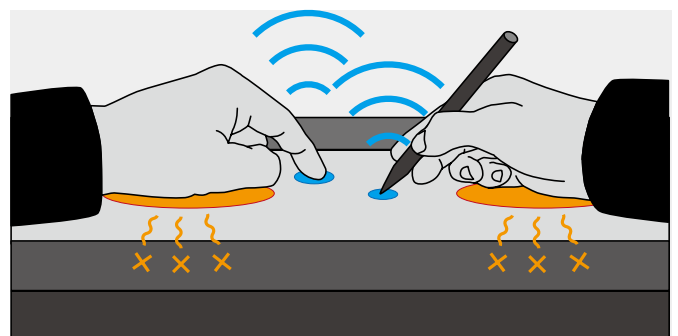
### Stylus Compatibility

Both monitors can be used with a touch stylus for smooth writing.

Visit [www.eizoglobal.com/it/stylus](http://www.eizoglobal.com/it/stylus) for compatibility information.

### Multitouch Interface

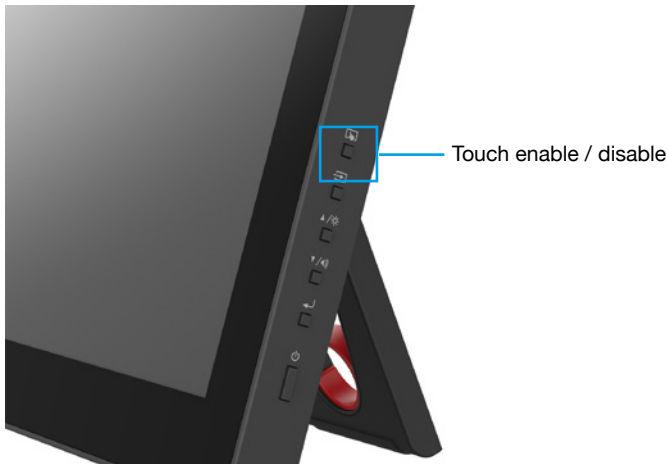
The screen can detect up to 10 simultaneous touches so you can easily operate a variety of applications in almost any environment. Furthermore, compared to 5-point multitouch the screen has a higher touch sensitivity, making writing with a finger or stylus smoother. The monitors are equipped with palm rejection which allows you to rest your hand directly on the screen without causing any unintended touch input.



Palm rejection minimum activation area is 2 x 2 cm.

## Touch Detection Control

Users can easily turn touch detection on or off by pushing the button conveniently located on the monitor's side.

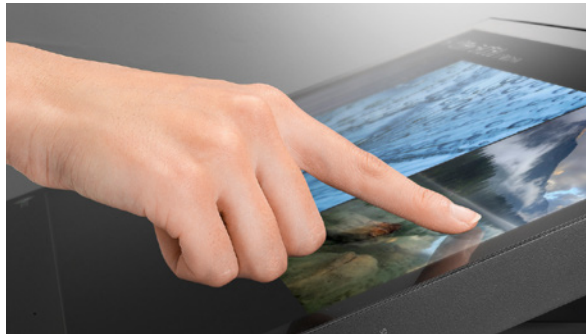


## Sensitivity Calibration

The monitors are equipped with technology which calibrates the touch sensitivity to minimize incorrect touch response due to environmental factors and electromagnetic noise. This ensures that the screen maintains accurate touch interaction during use.

## Fully Flat Design

The fully flat surface provides a seamless touch experience to the edges of the screen. This makes swiping motions and scrolling a breeze.



## IPS Panel

The monitors use an LED-backlit IPS panel with wide viewing angles that minimize color shift and contrast changes when viewing the screen from the side. The surface of the panel is also coated with an anti-glare treatment for further clarity in bright ambient environments.

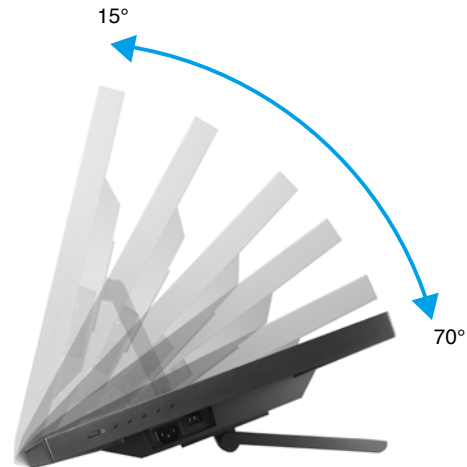


## High Durability

The touch screen has a non-scratch surface made of reinforced glass with a hardness of 5H (Mohs scale), making it durable enough to withstand long-term use in a range of environments.

## Reclining Stand

The equipped stand provides flexible positioning to allow the monitor to rest on your desk like a laptop and recline back to your desired angle. This makes it easy to place the monitor in the ideal position for comfortable use in any environment.



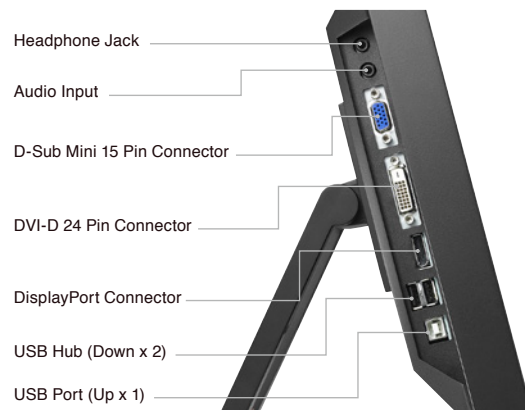
## Flicker-Free Viewing

Due to the way brightness is controlled on LED backlights, a small number of people perceive flicker which causes eye fatigue. The DuraVision FDF2382WT relieves eye fatigue by regulating brightness to make flicker unperceivable.



## Complete Connection

Both monitors are equipped with DisplayPort, DVI-D, and D-Sub inputs which are conveniently located on the side for easy access.



## Long-Term Reliability

The monitors are backed by a three year warranty which covers all components to ensure a long service life.

# Specifications

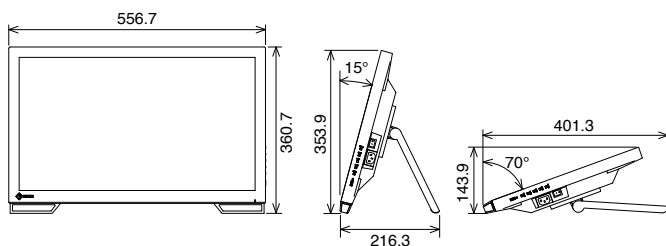
DuraVision FDF2382WT

DuraVision FDS1782T

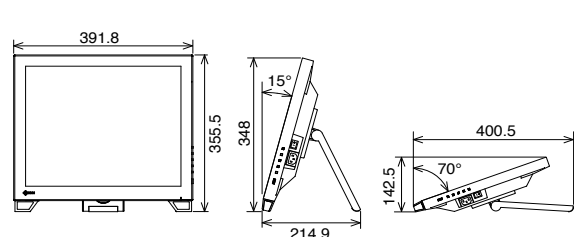
Model Variations		With Stand, Without Stand	With Stand, Without Stand
Cabinet Color		Gray, Black	Gray, Black
Panel	Type	IPS	IPS
	Backlight	LED	LED
	Size	23" / 58 cm	17" / 43 cm
	Native Resolution	1920 x 1080 (16:9 aspect ratio)	1280 x 1024 (5:4 aspect ratio)
	Viewable Image Size (H x V)	509.2 x 286.4 mm	337.9 x 270.3 mm
	Pixel Pitch	0.265 x 0.265 mm	0.264 x 0.264 mm
	Display Colors	16.77 million from a palette of 1.06 billion	16.77 million from a palette of 1.06 billion
	Viewing Angles (H / V, typical)	178°, 178°	178°, 178°
	Brightness (typical)	260 cd/m <sup>2</sup>	350 cd/m <sup>2</sup>
	Contrast Ratio (typical)	1000:1	1000:1
Response Time (typical)	11 ms (gray-to-gray)	11 ms (gray-to-gray)	
Touch Panel	Type	Projected Capacitive	Projected Capacitive
	Communication Protocol	USB	USB
	Touch Life	50 million touches (minimum)	50 million touches (minimum)
	Surface Hardness	5H	5H
	Compatible OS	Windows 10 (64-bit, 32-bit) / Windows 8.1 (64-bit, 32-bit) / Windows 7 (32-bit, 64-bit)	Windows 10 (64-bit, 32-bit) / Windows 8.1 (64-bit, 32-bit) / Windows 7 (32-bit, 64-bit)
Video Signals	Input Terminals	D-Sub mini 15 pin x 1, DVI-D 24 pin x 1 (with HDCP), DisplayPort x 1 (with HDCP)	D-Sub mini 15 pin x 1, DVI-D 24 pin x 1 (with HDCP), DisplayPort x 1 (with HDCP)
	Digital Scanning Frequency (H / V)	DVI: 31 - 64 kHz, 59 - 61 Hz (VGA Text: 69 - 71 Hz) DisplayPort: 31 - 68 kHz, 59 - 61 Hz (VGA Text: 69 - 71 Hz)	31 - 64 kHz, 59 - 61 Hz (VGA Text: 69 - 71 Hz)
	Analog Scanning Frequency (H / V)	31 - 81 kHz, 55 - 76 Hz	31 - 81 kHz, 55 - 76 Hz
	Sync Formats	Separate	Separate
USB	Function	1 port for touch panel control	1 port for touch panel control
	Standard	USB 2.0	USB 2.0
Audio	Speakers	1.0 W + 1.0 W	1.0 W + 1.0 W
	Input Terminals	3.5 mm stereo jack	3.5 mm stereo jack
	Output Terminals	3.5 mm headphone jack	3.5 mm headphone jack
	Sound Adjustment	Volume, Power Save, Source (DisplayPort)	Volume, Power Save, Source (DisplayPort)
Power	Power Requirements	AC 100 - 240 V, 50 / 60 Hz	AC 100 - 240 V, 50 / 60 Hz
	Maximum Power Consumption	42 W	37 W
	Typical Power Consumption	14 W	10 W
	Power Save / Standby Mode	0.7 W or less	0.7 W or less
	Power Management	DVI DMPM, VESA DPM	DVI DMPM, VESA DPM
Features & Functions	Preset Modes	Color Mode (User1, User2, sRGB)	Color Mode (User1, User2, sRGB)
	Others	Screen Adjustment (Clock, Phase, Position, Range (Auto), Screen Size (full screen, enlarge, normal), Smoothing (5 stages), Border Intensity, Color Adjustment (Brightness, Contrast, Gamma, Temperature, Saturation, Hue, Gain, Overdrive, Reset), Signal Switching, Product Information (name, serial number, resolution, operating time, etc.), OSD Menu Settings, Adjustment Lock, Power Indicator, Reset	Screen Adjustment (Clock, Phase, Position, Range (Auto), Screen Size (full screen, enlarge, normal), Smoothing (5 stages), Border Intensity, Color Adjustment (Brightness, Contrast, Gamma, Temperature, Saturation, Hue, Gain, Overdrive, Reset), Signal Switching, Product Information (name, serial number, resolution, operating time, etc.), OSD Menu Settings, Adjustment Lock, Power Indicator, Reset
Physical Specifications	Dimensions (Landscape, W x H x D)	556.7 x 143.9 - 353.9.7 x 216.3 - 401.3 mm	391.8 x 142.5 - 348 x 214.9 - 400.4 mm
	Dimensions (Without Stand, W x H x D)	556.7 x 339.2 x 54 mm	391.8 x 331 x 54 mm
	Net Weight	6.6 kg / 14.5 lbs	4.8 kg / 10.6 lbs
	Net Weight (Without Stand)	6 kg / 13.2 lbs	4.3 kg / 9.5 lbs
	Tilt	15° - 70°	15° - 70°
	Hole Spacing (VESA Standard)	100 x 100 mm	100 x 100 mm
Operating Temperature	5 - 35 °C	5 - 35 °C	
Operating Humidity (R.H., non condensing)	20 - 80 %	20 - 80 %	
Certifications & Standards	CB, CE, cTUVus, FCC-B, CAN ICES-3 (B), VCCI-B, BSMI, CCC, RCM, EAC, RoHS, WEEE, China RoHS	CB (IEC60601-1), CB, CE, cTUVus, FCC-B, CAN ICES-3 (B), VCCI-B, BSMI, CCC, RCM, EAC, RoHS, WEEE, China RoHS	
Supplied Accessories	AC power cord, signal cables (DVI-D - DVI-D, DisplayPort - DisplayPort), USB cable, audio cable, cleaning cloth, CD-ROM (PDF user's manual, touch panel driver, touch panel calibration software), mask sheet, setup guide	AC power cord, signal cables (DVI-D - DVI-D, DisplayPort - DisplayPort), USB cable, audio cable, cleaning cloth, CD-ROM (PDF user's manual, touch panel driver, touch panel calibration software), mask sheet, setup guide	
Warranty	Three Years	Three Years	

## Dimensions (Unit: mm)

### FDF2382WT



### FDS1782T



## EIZO Corporation

153 Shimokashiwano, Hakusan, Ishikawa 924-8566 Japan

Phone: +81-76-277-6792 Fax: +81-76-277-6793

www.eizoglobal.com

All product names and logos are trademarks or registered trademarks of their respective companies. DuraVision and EIZO are registered trademarks of EIZO Corporation.

Specifications are subject to change without notice.